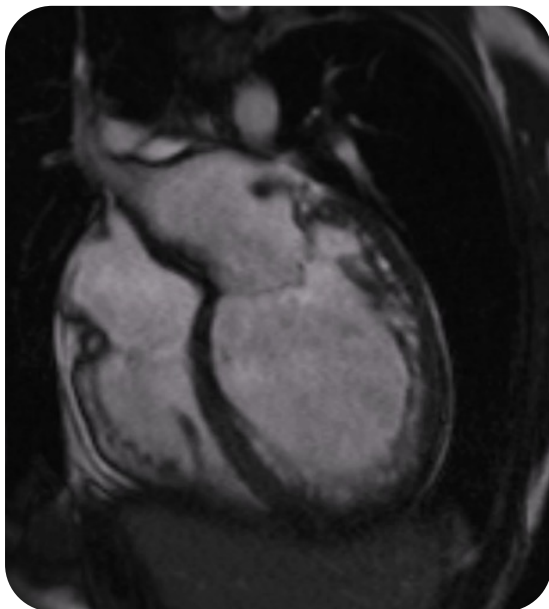
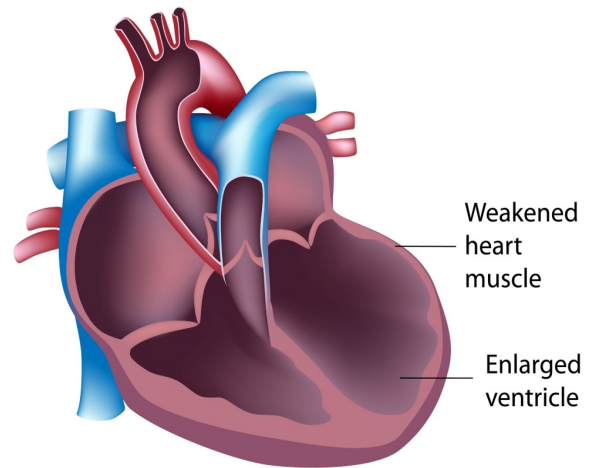




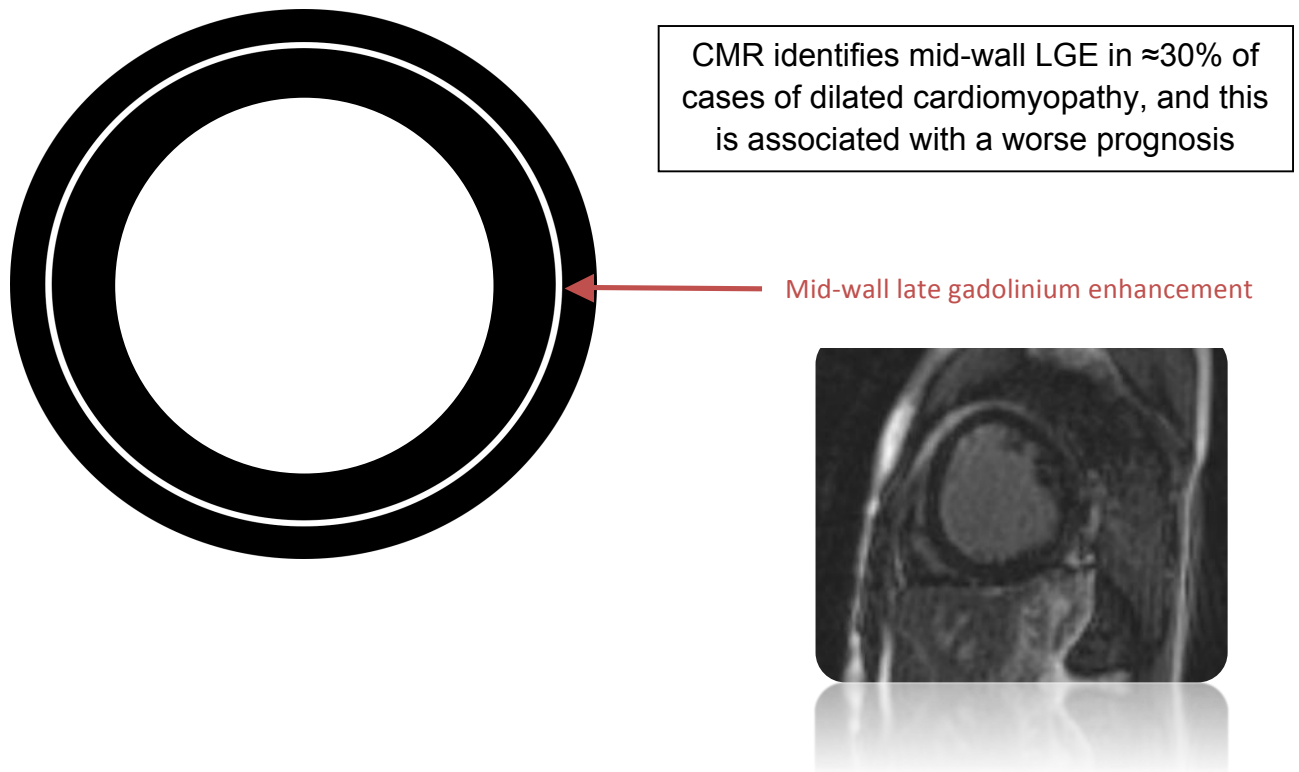
# Cardiac MRI Essentials

## Dilated cardiomyopathy

- CMR has a valuable role in identifying the aetiology of cardiomyopathies
- CMR provides accurate quantification of left and right ventricular volumes, wall thickness and ejection fraction
- CMR can identify functional mitral regurgitation and left ventricular thrombus



4-chamber view, showing left ventricular dilatation



## How do we perform CMR for dilated cardiomyopathy?

- Assess ventricular size and morphology
  - 2, 3, 4-chamber views
  - Short axis stack
- Assess regional wall motion and global systolic function
- Late gadolinium enhancement CMR
  - Exclude myocardial infarction
  - Mid-wall late gadolinium enhancement
- Complications of dilated cardiomyopathy
  - Functional mitral regurgitation
  - Left ventricular thrombus

## Further reading

Cardiovascular Magnetic Resonance, Fibrosis, and Prognosis in Dilated Cardiomyopathy.  
*JACC* 2006; **48**: 1977-1985 [[click here to access online](#)]